

**Cod. E4000IM**

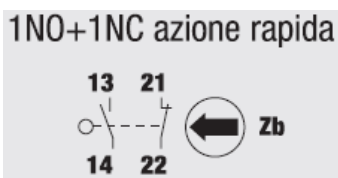


### Standard and Approvals

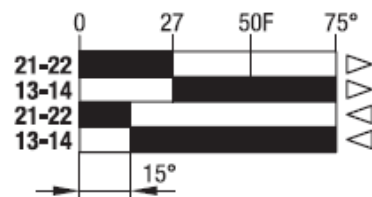
- Switch according to IEC/EN 60947-3
- Certified UL60947-4-1A and CAN/CSA C22.2 No. 60947-4-1-07
- Suitable as Manual Motor Controller



### Contact block



### Contact travel

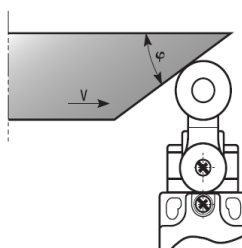


■ Contacts closed □ Contacts opened

### Characteristics

- Metal body and head
- IP66 protection degree
- 1NO+1NC snap action contact block
- Contact block with positive opening
- 1 Pg13,5 cable entry

### Drive cam operating parameters

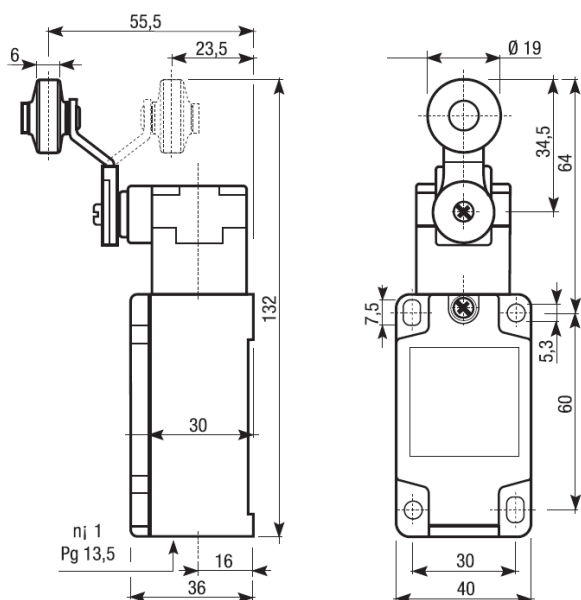


$\varphi$	V max (m/s)
30°	1,5
45°	1
60°	0,75
60-90°	0,25

Drive forces	
Minimum command force	25 Ncm
Minimum forced opening force	45 Ncm

### Dimension



### Cable Input/Output

1 on the bottom



### Actuator



### Cod. E40000IM

#### Technical data

		TYPE	E100 / E200 / E300 / E400	
Maximum operating frequency		operat./hour <sup>1</sup>	3600	
Insulation resistance		500 V DC MΩ	100	
Dielectric strenght		50/60 Hz for 1'	2500 <sup>2</sup>	
Rated insulation voltage	Ui	IEC947-5-1 V AC	500	
Rated thermal current	Ithe	IEC947-5-1 A	10	
Rated operating current	Category AC15 A300	le IEC947-5-1/EN60947-5-1	24V A	10
			125V A	6
			230 V A	6
			400 V A	3
Contact resistance		IEC255-7 cat.3 initial value mΩ	25	
Short circuit protective devices		IEC269 (IEC947-5-1) fuse type gL or gG	A	10
		IEC947-5-1	A	1000
Rated conditionals short circuit current		IEC947-5-1	A	1000
Pollution degree		IEC947-5-1	A	3
Protection degree		EN 60529		IP66
Protection against electric shock		plastic class		II
		metal class		I
Vibration resistance		IEC68-2-6 mm		0,35 ± 15% (10 ÷ 55 Hz ± 1 Hz)
Shock resistance		IEC68-2-27 11ms	g	30
Mechanical life			cycles	20.000.000
Electric life		at 250V AC 6A with resistance load cosφ=1	cycles	500.000
		at 250V AC 6A with inductive load cosφ=0,4	cycles	500.000
Distance between contacts		Snap action type	mm	2x1,25
		Low action type	mm	2x2
Terminals		Type		Screw with combined notch and retractable plate (notch Ph, Size 1)
		Screw	M	3,5
		Protection degree		IP20
		Material		Steel class 8,8 / Galvanized
		Max screw tightening torque		120 (12,24)
		Max connecting capacity	rigid cable mm <sup>2</sup>	
		flexible cable mm <sup>2</sup>		2x1,5
Terminal numbering				In accordance with EN50013
Air ambient temperature		operational	°C	-35 ÷ +85 (without formation of ice)
Relative umidity		operational		95% max

<sup>1</sup> One operation cycle means two movements, one to close and one to open as required by EN 60947-5.

<sup>2</sup> Between terminals of the same polarity; between terminals with different polarity; between live mechanical parts and ground; between live mechanical parts and non-current-carrying metal parts.